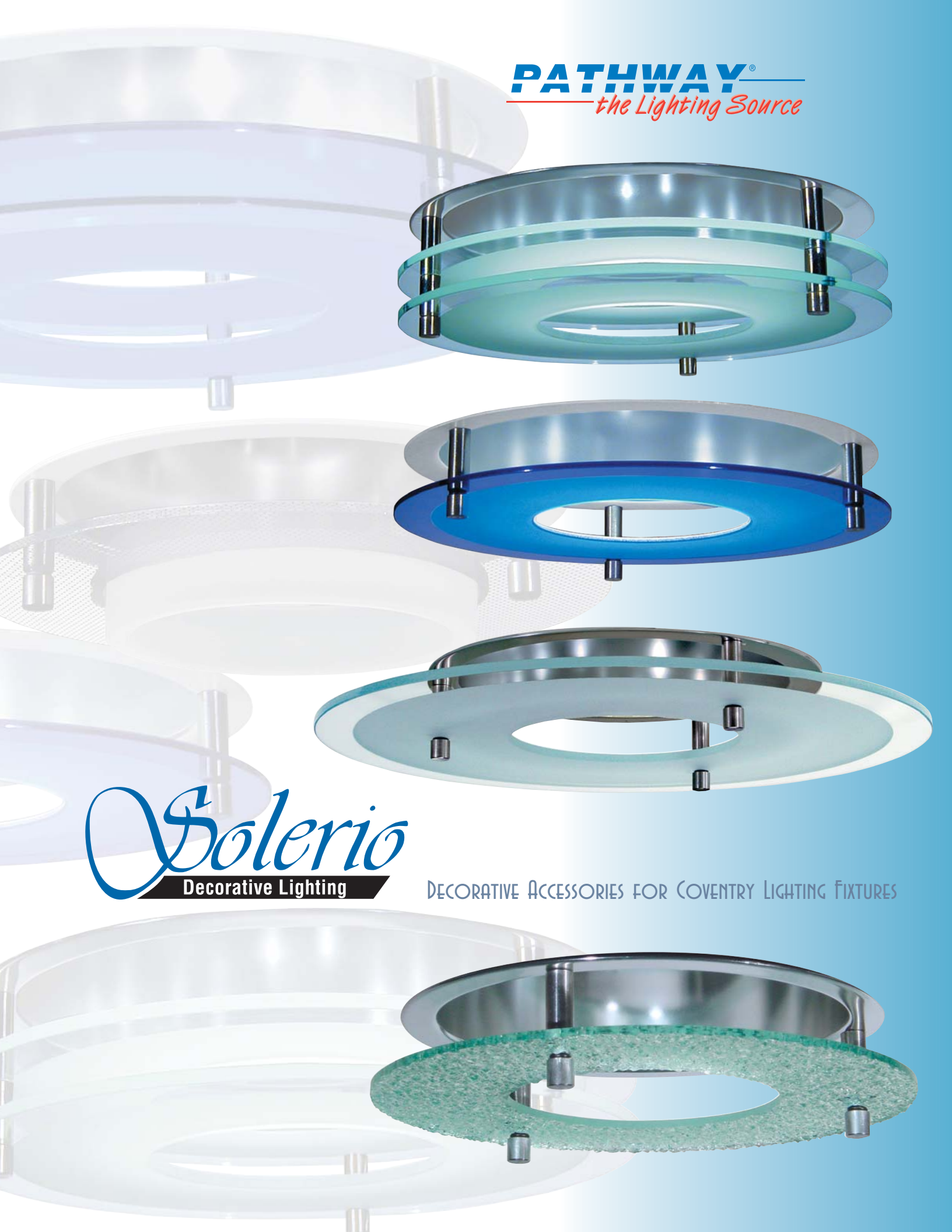


PATHWAY®
the Lighting Source



Solerio
Decorative Lighting

DECORATIVE ACCESSORIES FOR COVENTRY LIGHTING FIXTURES

DECORATIVE ELEMENTS

SUSPENDED GLASS DISCS

Tempered glass discs in single and multiple tiers are suspended from reflector flange by stainless fasteners and spacers. Sandblasted finishes create an elegant glow that stimulates visual excitement in the interior space while offering a shielding effect that enhances visual comfort. Glass is available in soda lime (green tint), borosilicate (white), cobalt blue and custom colors. Other sizes, materials, and finishes are available by contacting your local representative.

SERIES ICE

OPEN APERTURE DISC

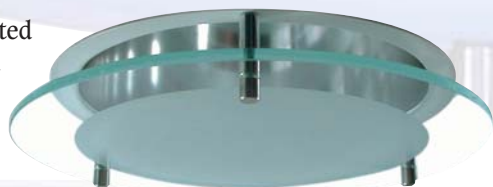
A single disc is frosted to within $\frac{3}{4}$ " of edge and features a 4" opening in center. Shown in soda lime and cobalt blue glass. *See left & below.*



SERIES IC

SOLID DISC

Solid glass disc is frosted in center and has a $\frac{3}{4}$ " clear outer ring. *See right.*



SERIES IC12

OVERSIZE SOLID GLASS DISC

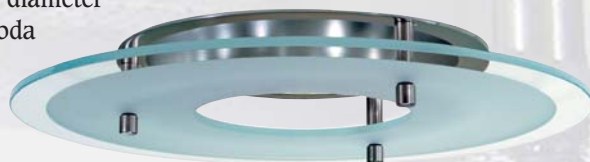
12" diameter solid glass disc with frosted center is shown in soda lime glass with frosted inner ring and stainless fasteners. *See right.*



SERIES IC12

12" DIAMETER OPEN APERTURE DISC

Oversized disc is frosted with a $\frac{1}{4}$ " wide clear outer ring and features a 4" diameter center opening. Shown in soda lime glass and available with frosted designs in custom patterns. *See right.*



SERIES IMW

PERFORATED METAL

Clear acrylic disc features a perforated metal layer that adds textural interest. A frosted glass drop ring in the center captures the light and is available in white or cobalt blue. Fasteners are stainless or optional in white. *See right.*



SERIES MD

SOLID METAL DISCS

12" diameter solid metal disc with smooth painted finish features a 4" aperture with a drop ring in frosted white glass. Many custom finishes and textures are available. Shown in matte blue. *See right.*

GLASS, ACRYLIC AND METAL ACHIEVE ARCHITECTURAL IMPORTANCE WHEN CRAFTED INTO A SERIES OF DECORATIVE ACCESSORIES THAT ENHANCE VIRTUALLY ANY INTERIOR ENVIRONMENT. DECORATIVE ELEMENTS ARE DESIGNED TO ATTACH TO MANY OF COVENTRY'S INCANDESCENT, COMPACT FLUORESCENT AND HID ARCHITECTURAL DOWNLIGHTING FIXTURES.



SERIES 2ICE

TWO TIERED DISCS

Two tiers of open aperture discs each with frosted inner band ring are suspended from flange by stainless fasteners. Shown in soda lime and cobalt blue glass.

Requests for more than two tiers are accommodated.

See left & right.



SERIES ICE

OPEN APERTURE DISC

Glitter Ice is a single disc of soda lime glass that features a textured surface. Light is captured in the many facets for a texturally appealing cut crystal look.

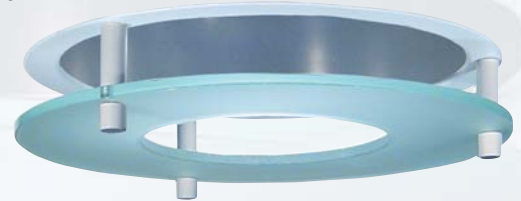
See below.



SERIES IFE

FULLY FROSTED GLASS DISC

Open aperture glass disc is fully frosted to edge for an opaque effect. Shown with optional white fasteners (WH). Tiered multiple discs are available. *See right.*



SERIES IDE

OPEN APERTURE DISC

Glass disc features a 4" diameter center opening, 1 1/2" clear inner ring and 1 1/8" frosted outer ring. Tiered, multiple disc styles are available.

See left.



SERIES MR

METAL STACK RINGS

A series of 3, 4 or 5 rings are crafted in aluminum with a matte white finish. Suspended with matching fasteners. *See right.*



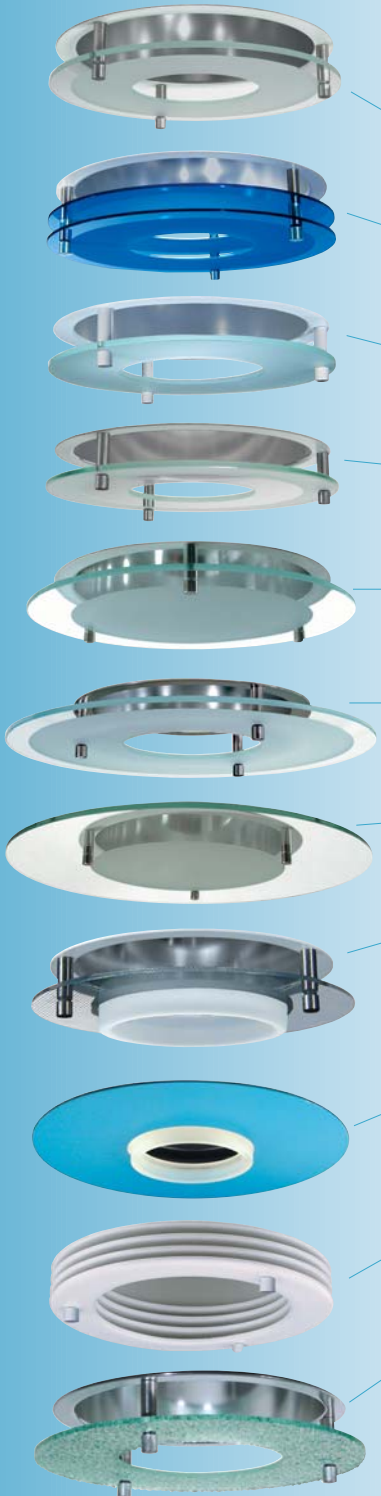
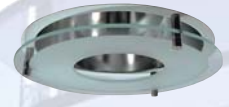
DECORATIVE ELEMENTS ORDERING GUIDE

HOW TO ORDER

1.) Select COVENTRY Housing

2.) Specify desired Decorative and Reflector Element

6VF132TE4/6HFSCLPF / ICE6



DESCRIPTION	Color Options*	4" Aperture	6" Aperture	7" Aperture	8" Aperture
SERIES ICE					
Glass Disk, Frosted Inner Ring, Open Aperture, Stainless Fasteners	Soda Lime "Green" Cobalt Blue Borosilicate "White"	ICE4 ICE4CB ICE4BS	ICE6 ICE6CB ICE6BS	ICE7 ICE7CB ICE7BS	ICE8 ICE8CB ICE8BS
SERIES 2ICE					
Tiered Glass Disk, Frosted Inner Ring, Open Aperture, Stainless Fasteners	Soda Lime "Green" Cobalt Blue Borosilicate "White"	2ICE4 2ICE4CB 2ICE4BS	2ICE6 2ICE6CB 2ICE6BS	2ICE7 2ICE7CB 2ICE7BS	2ICE8 2ICE8CB 2ICE8BS
SERIES IFE					
Glass Disk, Fully Frosted, Open Aperture, shown with Optional White Fasteners (WH)	Soda Lime "Green" Cobalt Blue Borosilicate "White"	IFE4 IFE4CB IFE4BS	IFE6 IFE6CB IFE6BS	IFE7 IFE7CB IFE7BS	IFE8 IFE8CB IFE8BS
SERIES IDE					
Open Aperture Glass Disk, 4" Dia. Center Opening, 1 1/2" Clear Inner Ring, 1 1/8" Frosted Outer Ring	Soda Lime "Green" Cobalt Blue Borosilicate "White"	IDE4 IDE4CB IDE4BS	IDE6 IDE6CB IDE6BS	IDE7 IDE7CB IDE7BS	IDE8 IDE8CB IDE8BS
SERIES IC					
Solid Glass Disk, Frosted Center, Stainless Fasteners	Soda Lime "Green" Cobalt Blue Borosilicate "White"	IC4 IC4CB IC4BS	IC6 IC6CB IC6BS	IC7 IC7CB IC7BS	IC8 IC8CB IC8BS
SERIES ICE12					
Oversize 12" Dia., Open Aperture Frosted 1/4" wide Clear Outer Ring, 4" Dia. Center Opening	Soda Lime "Green" Cobalt Blue Borosilicate "White"			ICE12712 ICE12712CB ICE12712BS	ICE12812 ICE12812CB ICE12812BS
SERIES IC12					
Oversize 12" Dia., Solid Glass Disk, Frosted Inner Ring, Stainless Fasteners	Soda Lime "Green" Cobalt Blue Borosilicate "White"			IC712 IC712CB IC712BS	IC812 IC812CB IC812BS
SERIES IM					
Clear Acrylic Disc with Perforated Metal Finish and Frosted Glass Center in White (or Cobalt Blue) Stainless Fasteners Cobalt Glass Center	Series IM with Etched White Glass Center	IMW4	IMW6	IMW7	IMW8
	Series IM with Etched	IMB4	IMB6	IMB7	IMB8
SERIES MD					
12" Diameter Solid Metal Disc, 4" Aperture with Smooth Painted Finish and Frosted Glass, Drop Ring	Matte Blue as shown or other colors/finishes as requested	MD4BL	MD6BL	MD7BL	
SERIES MR, Metal Stack Rings					
Five Rings	Smooth White with White	MR54	MR56	MR57	MR58
Four Rings		MR44	MR46	MR47	MR48
Three Rings		MR34	MR36	MR37	MR38
SERIES IGE, Glitter Ice					
Single Disc of Textured Glass, Stainless Fasteners. Tiered Styles also available	Soda Lime "Green"	IGE4	IGE6	IGE7	IGE8

For additional sizes, colors, materials and textures, please contact the factory or your local representative.

Optional matte white fasteners (in lieu of stainless) . . . specify suffix WH.

A variety of custom glass colors such as ruby red, teal green, and turquoise blue are available.