

APPLICATION

Low voltage LED lighting fixtures using remote driver platforms are ideally suited to applications that require easy access to LED drivers for routine maintenance and improved LED life and reliability. Remote driver platforms are especially useful in hard to access ceilings and where historical or important architectural features cannot be disturbed after lighting fixtures are installed.

PRODUCT DATA

REFLECTOR: Lower reflector is soft specular Alzak and features a 5/8" polished overlap flange which is standard. Regressed lenses are available in a variety of styles.

HOUSING: Heavy gauge aluminum cylinder housing is finished to an architectural grade with a standard exterior finish of matte white, powder coat paint. Optional or custom colors available.

ELECTRICAL: Fixture designed to be used with remote low voltage power distribution systems. Includes a quick connect power connector and thermal protection module. See table for wattages and delivered lumens at various drive currents.

LED MODULE: Bridgelux Vero 29 COB offers superior efficiency, stable consistent color and good color rendering CRI = 80. Available in 90 CRI

• Expected lamp life to be 50,000 hours with 70% lumen maintenance when ambient temperatures do not exceed 35°C. Lower ambient temperatures yield longer lamp life.

BENEFITS OF REMOTE DRIVER PLATFORMS

- Centralized power (driver) located in an accessible location for easy maintenance.
- Improved thermal management in lighting fixtures yields dramatically increased LED life and reliability.
- Remote driver with low voltage distribution – up to 200 ft.
- Low voltage class 2 wiring between driver panel and lighting fixtures. No conduit required.



For Damp Location

CALIBER PLUS

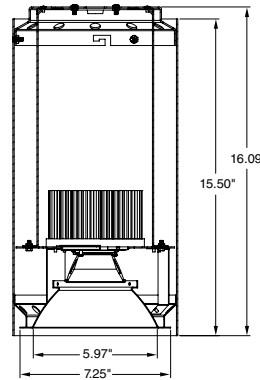
ARCHITECTURAL



SERIES C6SLCDB79V LENSED Low Voltage LED Cylinder
for Remote Driver/Power Supply 998-5170 Lumens



**5 Year
Warranty**



Catalog #:

C6SLCDB79V

Example: C6SLCDB79V35KL

Fixture Series	Color Temp.	Beam Dist.
Surface C6SLCDB79V	5K = 5000K	L = Wide, for use with Lensed Reflector
Pendant C6PLCDB79V	4K = 4000K	
Wall C6WLCDB79V	35K = 3500K	
Coiled Cord C6C*LCDB79V	3K = 3000K	
Straight Cord C6A*LCDB79V	27K = 2700K	

1 = White canopy/ White cord 2 = White canopy/ Black cord 9 = White canopy/ Clear cord
 3 = Black canopy/ White cord 4 = Black canopy/ Black cord 10 = Black canopy/ Clear cord
 7 = Silver canopy/ White cord 8 = Silver canopy/ Black cord 11 = Silver canopy/ Clear cord
 5 = Bronze canopy/ White cord 6 = Bronze canopy/ Black cord 12 = Bronze canopy/ Clear cord

Optional Finishes

Suffix #

Suffix #

- Black Cylinder Housing – B Satin Aluminum Housing – SA
- Bronze Cylinder Housing – Z Metallic Aluminum Housing.... – MA
- Galvanite Housing – GAL Colors, See Next Page

Fixture:	Type:
Project:	

6PLED

Example: 6PLEDL7HAZPF

Trim	Trim Finish w/polished flange
6PLED	– Open Downlight Reflector
L3	– C73 Prismatic Glass Lens
L5	– Frosted Glass Lens
L6	– Frosted Acrylic Lens Option
L7	– Solite Micro-Prismatic Glass Lens
L8	– Clear Poly Carbonate Lens Option
L9	– Clear Tempered Glass Lens Option
	SCLPF – Soft Specular Clear Alzak
	HAZPF – Haze Alzak

For white painted flange, drop "PF" from Catalog #.
For other finishes, consult reflector section.

Manufactured and tested to UL#2108/8750 and CSA standards.
Note: Suitable for damp location.

Fixtures are not designed for direct contact with insulation.

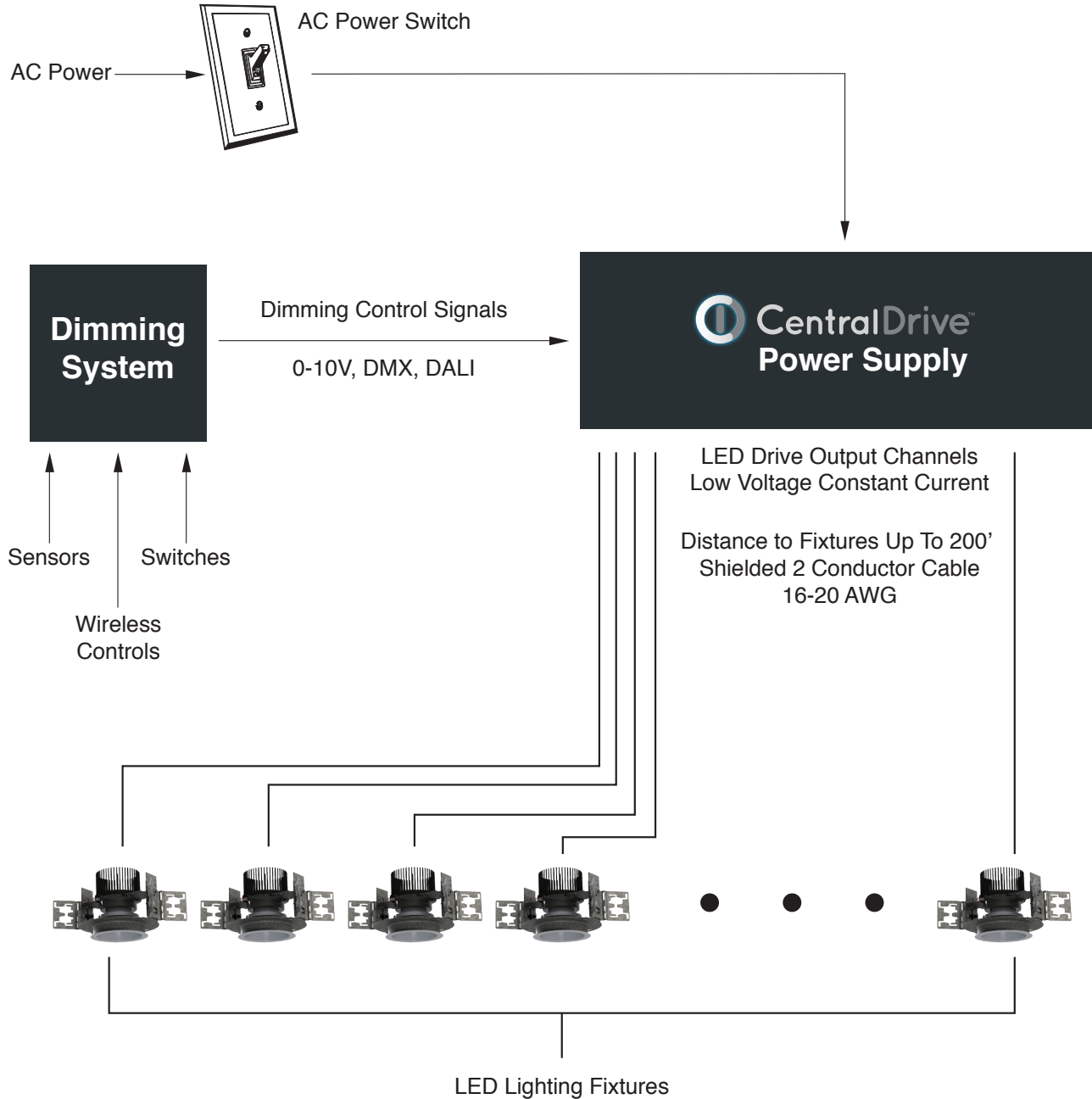
All Pathway® products meet or exceed requirements as established by the National Electrical Code. Specifications subject to change without notice. Alzak® is a registered trademark of Alcoa.



Pathway Lighting Products, Inc., P.O. Box 591, Old Saybrook, CT 06475-0591
 voice 800.342.0592 • fax 800.207.0090 • www.pathwaylighting.com • e-mail: sales@pathwaylighting.com

LCDC5.1
CBMNUH

Typical Layout for Low Voltage LED Lighting Fixtures with Remote Driver Platform



Note: For all CentralDrive systems, emergency backup applications must use a dedicated power supply supported by inverter/generator power.

MOUNTING: (Specify when ordering.)

Ceiling (Surface) Mount – Provided with mounting holes for securement to 4" octagon junction box.

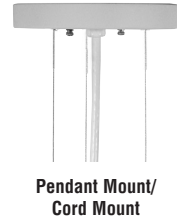
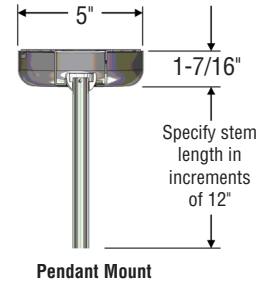
Wall Mount – Standard bracket protrudes 3.25" from wall. Mounts to 4" octagon junction box.

Pendant Mount – Swivel mount canopy allows cylinder to hang plumb up to 45° sloped ceiling stem 3/8" IPS (specify length) canopy adds 1.5" to overall length. Standard finish white powder coat. Specify Pendant Kit as follows:

EXAMPLE: PK 24 W

Swivel Pendant Kit
Stem Length in inches (add 1.5" for canopy)
White Finish (W), Black (B), or Bronze (Z)

Cable/Cord Mount – Supplied with 10' field adjustable aviation cable and either straight or coiled cord. Ceiling canopy to match finish on cylinder housing. Custom lengths available.



OPTIONS & ACCESSORIES

Available Reflector Finishes



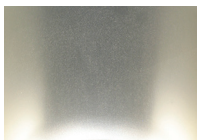
Clear
Soft Specular "SCL"



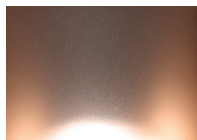
Pewter
Diffused "EPW"
Soft Specular "SPW"



Haze
Diffused "HAZ"



Straw
Diffused "EST"
Soft Specular "SST"



Bronze
Diffused "EBZ"
Soft Specular "SBZ"



Wheat
Diffused "EWT"
Soft Specular "SWT"

Our standard reflector finish is soft specular clear Alzak (SCL) with a polished self-flange (PF). Additional hues are noted to left. Several of these are offered in both a soft specular and a diffused/matte finish. For colors not shown, contact our sales department for advice on custom anodized finishes.

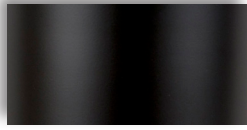
Specified suffix of desired finish.

Example: 4VLEDSCLPF

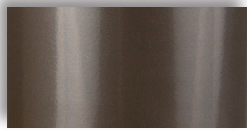
For white painted flange omit PF.

COLOR CHART

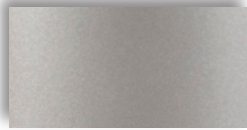
Standard Finishes (Powder Coat)



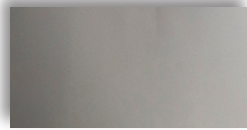
Matte Black (MB)



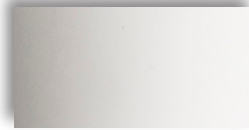
Bronze (BZ)



Satin Aluminum (SA)



Metallic Aluminum (MA)

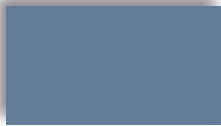


Matte White (MW)

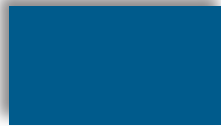
Special Finishes (Powder Coat)

Specify color followed by finish: 1 = Matte; 2 = Semi-Gloss; 3 = Gloss

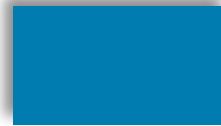
Example: BA1



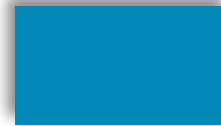
Blue Gray (BA)
(RAL #5014)



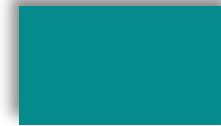
Royal Blue (BB)
(RAL #5017)



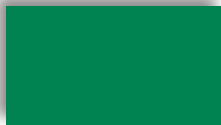
Medium Blue (BC)
(RAL #5015)



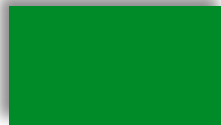
Sky Blue (BD)
(RAL #5012)



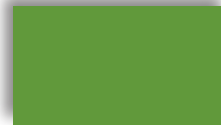
Turquoise (BE)
(RAL #5018)



Forest Green (GA)
(RAL #6024)



Leaf Green (GD)
(RAL #6037)



Green Apple (GC)
(RAL #6018)



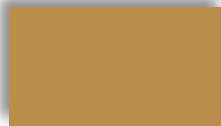
Yellow (YA)
(RAL #1018)



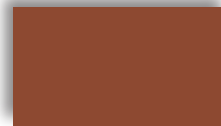
Orange Yellow (YB)
(RAL #1017)



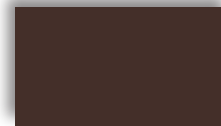
Orange (OA)
(RAL #2003)



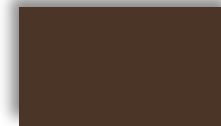
Yellow Ochre (OB)
(RAL #1024)



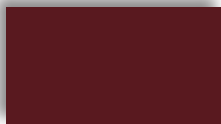
Burnt Umber (RA)
(RAL #8004)



Cinnamon (RB)
(RAL #8017)



Burnt Sienna (RC)
(RAL #8014)



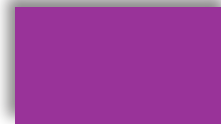
Brick Red (RD)
(RAL #3005)



Cadmium Red (RE)
(RAL #3020)



Pinot Noir (PA)
(RAL # 4004)



Magenta (PB)
(RAL #4008)



Violet (PC)
(RAL #4007)

Custom finishes and colors available on request.