

APPLICATION

A decorative cylinder for surface, wall, cable or pendant mount is ideal for applications that require long lamp life and energy saving benefits of LED technology.

PRODUCT DATA

REFLECTOR: A primary reflector controls beam spread and is available in a variety of distributions.

HOUSING: Heavy-gauge aluminum cylinder housing is finished to an architectural grade with a standard exterior finish of matte white, powder coat paint. A variety of finishes are available. Custom colors upon request.

ELECTRICAL: 120 to 277 VAC, 50-60 Hz.

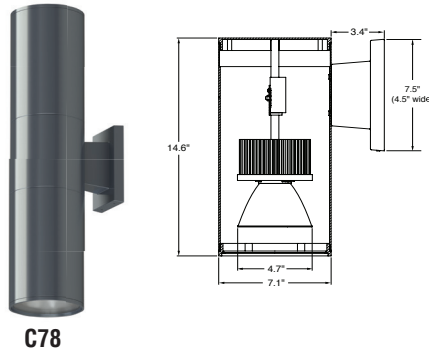
LED MODULE: Bridgelux Vero 29 LED engine is 80 CRI (optional 90 CRI), and is available in a variety of color temperatures.

- Expected lamp life to be 50,000 hours with 70% lumen maintenance when ambient temperatures do not exceed 45°C. Lower ambient temperatures yield longer lamp life.

HEAT MANAGEMENT: An engineered heat sink provides passive cooling for optimum heat management of the LED engine. As an additional safety measure, and to ensure enhanced reliability, an NTC thermistor communicating with the LED driver is used to monitor the critical value of the internal operating temperature. If this temperature exceeds the recommended operating range for any reason, the light output is gradually reduced to maintain the internal operating temperature within acceptable limits. This feature will extend the life of both the LED module and driver if adverse conditions are experienced.

DIMMING: See below for available dimming options.
See second page for mounting options.

Related Product



C78

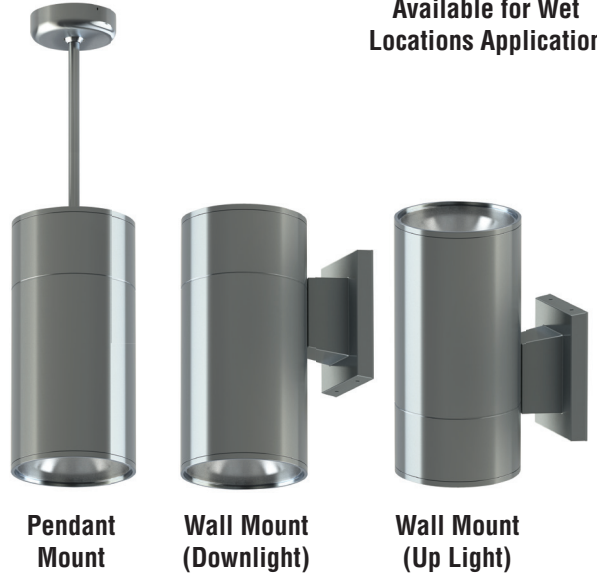


SERIES C77SLBV LED Cylinder 1012-3165 Lumen Bridgelux Vero 29

CALIBER PLUS

5 Year
Warranty

Available for Wet
Locations Application



Pendant
Mount

Wall Mount
(Downlight)

Wall Mount
(Up Light)



Damp Location Listed
Optional Wet Location

Catalog #:

C77

Example: C77SLBVD1535KML9D8

Fixture Series	Lamp Direction	Delivered Lumens Range	Color Temp.	Beam Dist.	Lens	Dimming
Surface C77SLBV Pendant[^] C77PLBV Wall C77WLVB Straight Cord[^] C77A [^] LBV	D = Downlight U = Up Light	10 = (1012-1055, 15W) 15 = (1518-1583, 19W) 20 = (2024-2110, 23W) 25 = (2530-2638, 27W) 30 = (3036-3165, 30W) C9 (90 CRI)	4K (4000K) 35K (3500K) 3K (3000K) 27K (2700K)	S = 22° M = 32° W = 48° XW = 61°	L9 – Clear Tempered Glass Lens L5 – Frosted Glass Lens L7 – Solite Micro-Prismatic Glass Lens	D8 = Xitanium 0-10V 1% (linear)

[^] Wet location not available on pendant mounted products

- * 1 = white canopy/ white cord 2 = white canopy/ black cord 9 = white canopy/ clear cord
 3 = black canopy/ white cord 4 = black canopy/ black cord 10 = black canopy/ clear cord
 7 = silver canopy/ white cord 8 = silver canopy/ black cord 11 = silver canopy/ clear cord

Options	Finish
WL = Wet Location [^] F = Fuse and Fuse Holder	blank (white) SA (Satin Aluminum) B (Black) Z (Bronze) COLORS (See Next Page)

Fixture:	Type:
Project:	

Manufactured and tested to UL#1598/8750 and CSA standards.
 Note: Suitable for damp location.
 All Pathway® products meet or exceed requirements as established by the National Electrical Code. Specifications subject to change without notice.



Pathway Lighting Products, Inc., P.O. Box 591, Old Saybrook, CT 06475-0591
 voice 800.342.0592 • fax 800.207.0090 • www.pathwaylighting.com • e-mail: sales@pathwaylighting.com

LCBV18.0
UMMUL

SERIES C77SLBV – LED Cylinder Downlight

MOUNTING: (Specify when ordering.)

Ceiling (Surface) Mount – Provided with mounting holes for securement to 4" octagon junction box.

Wall Mount – Standard bracket protrudes 3.3" from wall and measures 7.5" tall by 4.5" wide. Mounts to 4" octagon junction box.

Pendant Mount – Swivel mount canopy allows cylinder to hang plumb up to 45° sloped ceiling stem 3/8" IPS (specify length) canopy adds 2.0" to overall length. Standard finish white powder coat. Specify Pendant Kit as follows:

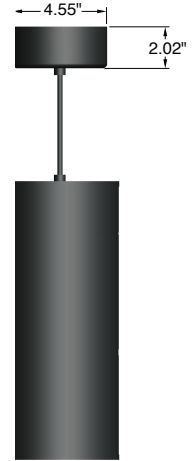
EXAMPLE: PS 24 W

Swivel Pendant Stem Kit _____
 Stem Length in inches (add 2.0" for canopy) _____
 White Finish (W), Black (B), or Bronze (Z) _____

Cord Mount – Supplied with 10' straight cord. Custom lengths available. Canopy adds 2.0" to overall length



Pendant Mount



Cord Mount

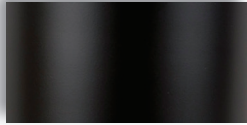
Delivered lumen/wattage data for fixtures in 3500K color temperature

FIXTURE	WATTAGE	RATED LUMENS	DELIVERED LUMENS	BEAM DISTRIBUTION	LPW
C77S1035KSD8L9	15	1000	1055	S (22°)	70.33
C77S1035KMD8L9	15	1000	1038	M (32°)	69.2
C77S1035KWD8L9	15	1000	1012	W (48°)	67.47
C77S1035KXWD8L9	15	1000	1020	XW (61°)	68
C77S1535KSD8L9	19	1500	1583	S (22°)	83.32
C77S1535KMD8L9	19	1500	1556	M (32°)	81.89
C77S1535KWD8L9	19	1500	1518	W (48°)	79.89
C77S1535KXWD8L9	19	1500	1529	XW (61°)	80.47
C77S2035KSD8L9	23	2000	2110	S (22°)	91.74
C77S2035KMD8L9	23	2000	2075	M (32°)	90.22
C77S2035KWD8L9	23	2000	2024	W (48°)	88
C77S2035KXWD8L9	23	2000	2039	XW (61°)	88.65
C77S2535KSD8L9	27	2500	2638	S (22°)	97.7
C77S2535KMD8L9	27	2500	2594	M (32°)	96.07
C77S2535KWD8L9	27	2500	2530	W (48°)	93.7
C77S2535KXWD8L9	27	2500	2549	XW (61°)	94.41
C77S3035KSD8L9	30	3000	3165	S (22°)	105.5
C77S3035KMD8L9	30	3000	3113	M (32°)	103.77
C77S3035KWD8L9	30	3000	3036	W (48°)	101.2
C77S3035KXWD8L9	30	3000	3059	XW (61°)	101.97

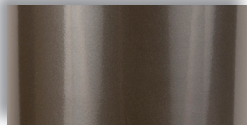
Above values reflect 3500K color temperatures. Scaling factors for other color temperatures: 2700K = .92; 3000K = .97; 4000K = 1.01

COLOR CHART

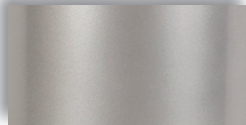
Standard Finishes (Powder Coat)



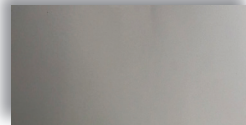
Matte Black (B)



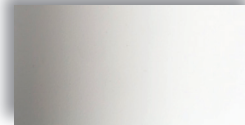
Bronze (Z)



Satin Aluminum (SA)



Metallic Aluminum (MA)

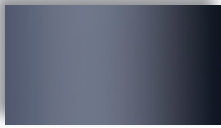


Matte White (blank/standard)

Special Finishes (Powder Coat)

Specify color followed by finish: 1 = Matte; 2 = Semi-Gloss; 3 = Gloss

Example: BGY1



Blue Gray (BGY)
(RAL #5014)



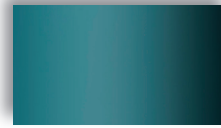
Royal Blue (RBL)
(RAL #5017)



Medium Blue (MBL)
(RAL #5015)



Sky Blue (SKY)
(RAL #5012)



Turquoise (TRQ)
(RAL #5918)



Forest Green (FGR)
(RAL #6024)



Leaf Green (LGR)
(RAL #6037)



Green Apple (AGR)
(RAL #6018)



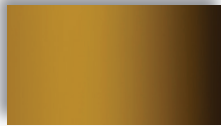
Yellow (YLW)
(RAL #1018)



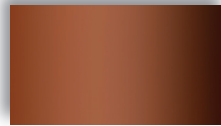
Orange Yellow (OYL)
(RAL #1017)



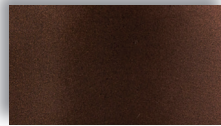
Orange (ORG)
(RAL #2003)



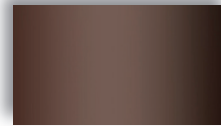
Yellow Ochre (YOC)
(RAL #1024)



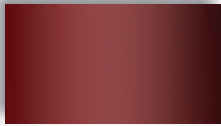
Burnt Umber (UMB)
(RAL #8004)



Cinnamon (CIN)
(RAL #8017)



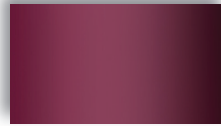
Burnt Sienna (SNA)
(RAL #8014)



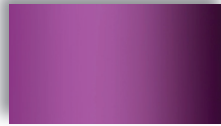
Brick Red (BRD)
(RAL #3005)



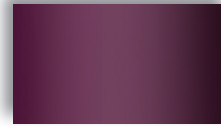
Cadmium Red (CAD)
(RAL #3020)



Pinot Noir (PNR)
(RAL # 4004)



Magenta (MAG)
(RAL #4008)



Violet (VIL)
(RAL #4007)

Custom finishes and colors available on request.