

APPLICATION

Medium distribution downlights for use in low to medium height ceilings requiring regressed lensed trims with splay.

PRODUCT DATA

REFLECTOR: Hydroformed heavy gauge aluminum reflector with Alzak finish. Self trimming flanged splay with **fresnel** or **prismatic** lens. Available in a wide range of finishes.

HOUSING: Frame-in module is fabricated from heavy gauge die formed steel and features a corrosion resistant galvanized finish. Standard plaster flange allows for a 1/2" ceiling thickness.

MOUNTING: Housing is supplied standard with expandable bar hangers which adjust from 14 1/2" to 26". Provision is provided for all four sides of frame-in module to accept bar hangers. Optional mounting brackets (BB) adjust vertically 2.5" and accept a variety of hanger bars, C-Channel, EMT or rigid bars (see optional accessories).

ELECTRICAL: 120 to 277 volt input 50 to 60 Hz high power factor electronic ballasts are instant start, under 10% THD. Consult Technical Section for additional ballast operating data. Optional emergency ballast (-EM) operates one lamp for 90 minutes, faceplate with test switch and charger light. Integral push to test switch available. Contact factory for more information.

JUNCTION BOX: Heavy gauge galvanized junction box pre-wired with grounding pigtail. Easy access covers. Multiple conduit knockouts listed for through branch circuit wiring.

SOCKET: Positive latch four pin thermoplastic. Twist lock socket supplied standard on 26, 32 and 42 watt models. 13 and 18 watt supplied with push in socket.

LAMP DATA:

LAMP	WATTS	BASE	BALLAST	LUMENS
Triple Tube 4-Pin	26	G24q-3	Elec.	1800
	32	G24q-3	Elec.	2400
	42	G24q-4	Elec.	3200
Quad Tube 4-Pin	13	G24q-1	Elec.	900
	18	G24q-2	Elec.	1250
	26	G24q-3	Elec.	1800

Standard lamping, initial lumens.


LISTED
FOR WET LOCATION
UNDER COVERED CEILING

Manufactured and tested to
UL#1598 and CSA standards.

Catalog #:

6LPHF1

Example: 6LPHF132TE4

Fixture Series	Lamp/Wattage	Ballast/Voltage [⊕]	Options
6LPHF	QTY	E4 / Electronic 120/277 D1 / 120V Lutron Dimming D2 / 277V Lutron Dimming [⊕] Refer to separate page for dimming ballast specifications and availability of other styles.	See Below
	TYPE		
	(Triple Tube)		
	1 26T		
	1 32T		
	1 42T		
	(Quad Tube)		
1 13Q			
1 18Q			
1 26Q			

Optional Accessories

Hanger Bars (set of 2) - Requires optional "BB" Mounting Bracket to be specified.

- 101782 = #520 Caddy Bars
- 9152 = 52" C-Channel
- 9127 = 27" C-Channel
- 27BH = 27" Solid Bar
- 24CBH = 24" one-piece B-Line C-Channel hanger bar

Fixture:		Type:	
Project:			

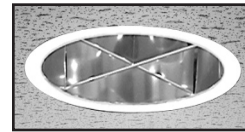
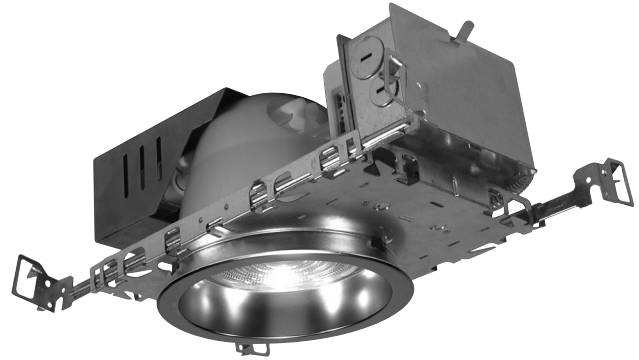
PATHWAY[®]
the Lighting Source

Pathway Lighting Products, Inc., P.O. Box 591, Old Saybrook, CT 06475-0591
voice 800.342.0592 • fax 800.2070090 • www.pathwaylighting.com • e-mail: sales@pathwaylighting.com

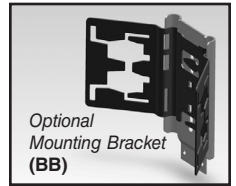
LEGENDS Plus
Affordable Performance

SERIES 6LPHF1 Lensed

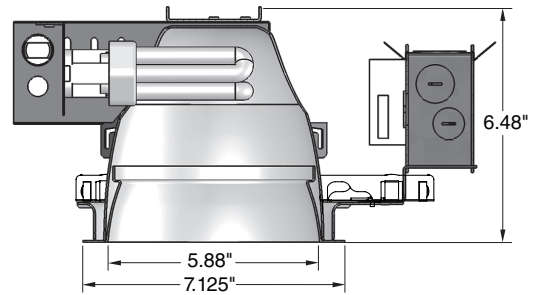
One Lamp Horizontal Fluorescent Lensed Downlight



XB - Cross Blade Louver



Optional Mounting Bracket (BB)



Rough Opening 6.5"

6HF1FL

Example: 6HF1FLSCLPF

Trim	Trim Finish w/polished flange
6HF1FL	- Fresnel Glass Lens
6HF1C73	- Corning C73 Prismatic Lens
6HF1CAL	- Clear Acrylic Lens
6HF1CL	- Clear Glass Lens
6HF1FRPWL	- Gasketed Radial Prismatic Lens with Plastic Trim Flange
	SCLPF - Soft Specular Clear Alzak

For white painted flange, drop "PF" from Catalog #.
For other finishes, consult reflector section.

Options

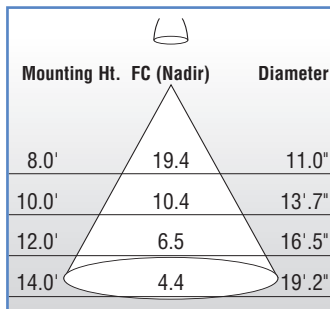
- EM = Emergency Battery Pack w/remotely located Test Switch
- F = Fused
- BB = Vertically Adjustable Mounting Bracket

All Pathway[®] products meet or exceed requirements as established by the National Electrical Code. Specifications subject to change without notice. Alzak[®] is a registered trademark of Alcoa.

PHOTOMETRIC DOWNLIGHT DISTRIBUTION

Catalog No. – 6LPHF132TE4 / 6HF1PLSCLPF
Lamp(s) – (1) 32W PLT
Lumens – 2400
Spacing Criteria – 1.15
Efficiency – 38.4%

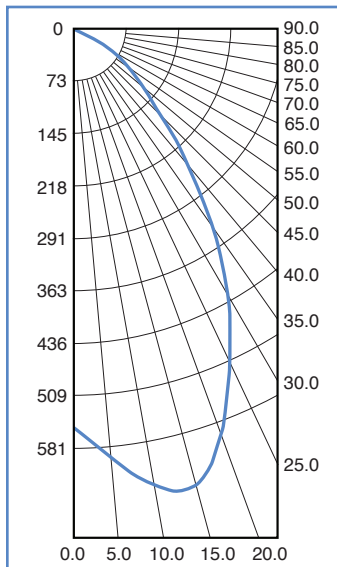
CONE OF LIGHT



ZONAL LUMENS SUMMARY

ZONE	LUMENS	% LAMP	% LUMINAIRE
0- 30	474	19.7	51.4
0- 40	680	28.3	73.8
0- 60	891	37.1	96.6
0- 90	922	38.4	100.0
90-120	0	0.0	0.0
90-130	0	0.0	0.0
90-150	0	0.0	0.0
90-180	0	0.0	0.0
0-180	922	38.4	100.0

CANDELA DISTRIBUTION



CANDELA

VERTICAL ANGLE	0
0.00	553
5.00	598
10.00	644
15.00	654
20.00	598
25.00	513
30.00	429
35.00	332
40.00	240
45.00	167
50.00	122
55.00	85.9
60.00	54.8
65.00	25.8
70.00	9.09
75.00	0.740
80.00	0.210
85.00	0.070
90.00	0.010

Initial Footcandles at a 30° Work Plane
 Beam diameter calculated at 50% of maximum fc at nadir.

COEFFICIENTS OF UTILIZATION

PCC	.8				.7				.5				.3				.1				0
PW	.7	.5	.3	.1	.7	.5	.3	.1	.5	.3	.1	.5	.3	.1	.5	.3	.1	.5	.3	.1	0
RCR	0	45	45	45	45	44	44	44	44	42	42	42	40	40	40	39	39	39	38	38	
1	43	41	40	39	42	41	40	39	39	38	37	38	37	36	36	36	35	35	35	35	
2	40	38	36	34	39	37	35	34	36	34	33	35	33	32	34	33	32	31	31	31	
3	37	34	32	30	37	34	32	30	33	31	30	32	30	29	31	30	29	28	28	28	
4	35	32	29	27	34	31	29	27	30	28	27	29	28	26	29	27	26	25	25	25	
5	33	29	26	24	32	29	26	24	28	26	24	27	25	24	26	25	23	23	23	23	
6	31	27	24	22	30	26	24	22	26	23	22	25	23	22	25	23	21	21	21	21	
7	29	25	22	20	28	24	22	20	24	22	20	23	21	20	23	21	20	19	19	19	
8	27	23	20	18	27	23	20	18	22	20	18	22	20	18	21	19	18	17	17	17	
9	26	21	19	17	25	21	19	17	21	18	17	20	18	17	20	18	17	16	16	16	
10	24	20	17	16	24	20	17	16	19	17	15	19	17	15	19	17	15	15	15	15	

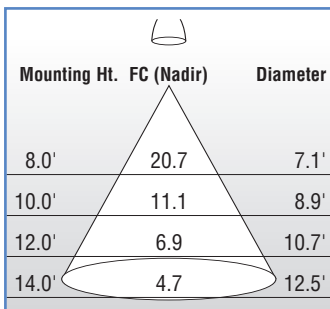
PFC = 0.20

AVERAGE LUMINANCE

Angle	CD/M ²
45°	12962
55°	8208
65°	3349
75°	156
85°	44

Catalog No. – 6LPHF132TE4 / 6HF1FLSCLPF
Lamp(s) – (1) 32W PLT
Lumens – 2400
Spacing Criteria – .84
Efficiency – 39.9%

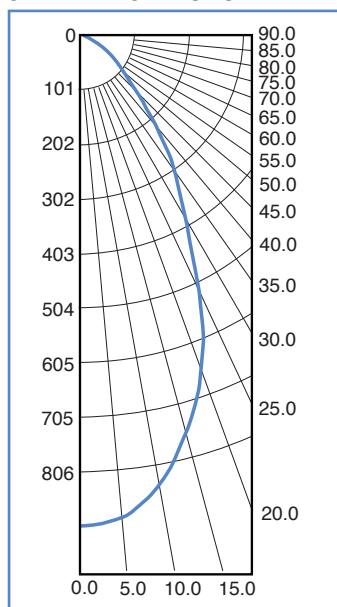
CONE OF LIGHT



ZONAL LUMENS SUMMARY

ZONE	LUMENS	% LAMP	% LUMINAIRE
0- 30	531	22.1	55.4
0- 40	720	30.0	75.1
0- 60	916	38.2	95.6
0- 90	959	39.9	100.0
90-120	0	0.0	0.0
90-130	0	0.0	0.0
90-150	0	0.0	0.0
90-180	0	0.0	0.0
0-180	959	39.9	100.0

CANDELA DISTRIBUTION



CANDELA

VERTICAL ANGLE	0
0.00	907
5.00	894
10.00	845
15.00	758
20.00	659
25.00	521
30.00	388
35.00	306
40.00	220
45.00	151
50.00	107
55.00	84.6
60.00	63.8
65.00	37.1
70.00	15.3
75.00	1.23
80.00	0.200
85.00	0.070
90.00	0.000

Initial Footcandles at a 30° Work Plane
 Beam diameter calculated at 50% of maximum fc at nadir.

COEFFICIENTS OF UTILIZATION

PCC	.8				.7				.5				.3				.1				0
PW	.7	.5	.3	.1	.7	.5	.3	.1	.5	.3	.1	.5	.3	.1	.5	.3	.1	.5	.3	.1	0
RCR	0	47	47	47	46	46	46	46	44	44	44	42	42	42	40	40	40	40	40	40	
1	45	43	42	41	44	43	42	41	41	40	39	39	39	38	38	37	37	36	36	36	
2	42	40	38	36	41	39	37	36	38	36	35	36	35	34	35	34	33	33	33	33	
3	39	36	34	32	39	36	34	32	35	33	31	34	32	31	33	31	30	30	30	30	
4	37	33	31	29	36	33	31	29	32	30	28	31	29	28	30	29	28	27	27	27	
5	35	31	28	26	34	30	28	26	30	27	26	29	27	25	28	27	25	25	25	25	
6	33	29	26	24	32	28	26	24	28	25	24	27	25	23	26	25	23	23	23	23	
7	31	27	24	22	30	26	24	22	26	23	22	25	23	21	25	23	21	21	21	21	
8	29	25	22	20	29	24	22	20	24	22	20	24	21	20	23	21	20	19	19	19	
9	27	23	20	19	27	23	20	19	23	20	19	22	20	18	22	20	18	18	18	18	
10	26	22	19	17	26	22	19	17	21	19	17	21	19	17	21	19	17	17	17	17	

PFC = 0.20

AVERAGE LUMINANCE

Angle	CD/M ²
45°	11671
55°	8087
65°	4814
75°	260
85°	44

Series 6LPHF1 - Lensed One Lamp Horizontal Fluorescent Lensed Downlight