

APPLICATION

A decorative square pendant is ideal for applications that require an architectural accent and the high lumen output, long lamp life and energy saving benefits of LED technology.

PRODUCT DATA

DESCRIPTION: Decorative square cylinder fixture features a heavy-gauge steel housing that is finished to an architectural grade with a durable powder coat finish. Standard in matte white with variety optional colors. Custom finishes are available upon request. Attached decorative element is fashioned from thick, clear acrylic for a unique contemporary appearance.

ELECTRICAL: 120 to 277 VAC, 50-60 Hz.

LED MODULE & DRIVER: Bridgelux Vero LED module and driver. CRI = 80. Available in 90 CRI.

- Expected lamp life to be 50,000 hours with 70% lumen maintenance when ambient temperatures do not exceed 35°C. Lower ambient temperatures yield longer lamp life.

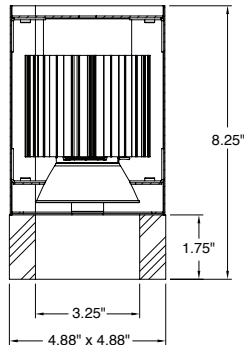
HEAT MANAGEMENT: Engineered heat sink provides passive cooling for optimum heat management of LED engine.

DIMMING: See below for available dimming options.

MOUNTING: Straight cord mount features a ceiling canopy that measures 4.55" in diameter and 2" high.



For Damp Location



CALIBER PLUS

ARCHITECTURAL

SERIES C5X5SQ LED Square Cylinder Downlight 1074-3484 Lumen Bridgelux Vero

LumiCube™

5 Year
Warranty



Catalog #:

C5X5SQ

Example: C5X5SQA1LB78V303KD120SAAP

Fixture Series	Lumens	Color Temp.	Beam Dist.	Dimming	Housing Finish	Decorative Element
Straight Cord – C5X5SQA* LB78V	10 (1074L - 1332L, 9W) 15 (1713L - 2152L, 16W) 20 (1941L - 2408L, 18W) 25 (2692L - 3123L, 26W) 30 (3003L - 3484L, 30W)	5K (5000K) 4K (4000K) 35K (3500K) 3K (3000K) 27K (2700K)	For models without acrylic piece: N = 27° M = 47° W = 62° XW = 92° For model with acrylic piece: AP = 45° “Long” reflector (extends below bottom of housing): SL = 11° NL = 21° ML = 39° XL = 71°	D8 0-10V (linear) 120-277 VAC D120 120V two wire forward/reverse phase	blank = Matte White SA = Satin Aluminum Z = Bronze B = Matte Black Special Finishes (See Next Page)	blank = No Decorative Element AP = Thick Clear Acrylic
	C9 (90 CRI)					

- * 1 = white canopy/ white cord 2 = white canopy/ black cord
3 = black canopy/ white cord 4 = black canopy/ black cord
5 = bronze canopy/ white cord 6 = bronze canopy/ black cord
7 = silver canopy/ white cord 8 = silver canopy/ black cord

Fixture:	Type:
Project:	

Options

- F = Fuse and Fuse Holder

Manufactured and tested to UL#1598/8750 and CSA standards. Note: Suitable for damp location.

All Pathway® products meet or exceed requirements as established by the National Electrical Code. Specifications subject to change without notice.

PATHWAY®
the Lighting Source

Pathway Lighting Products, Inc., P.O. Box 591, Old Saybrook, CT 06475-0591
voice 800.342.0592 • fax 800.207.0090 • www.pathwaylighting.com • e-mail: sales@pathwaylighting.com

LCBV25.0
CBCMUN

Delivered Lumen Data (3500K Color Temperature) - Model Without Acrylic Piece

FIXTURE	OPTIC	WATTAGE	RATED LUMENS	DELIVERED LUMENS	BEAM DISTRIBUTION	LPW
C5X5SQA*LB78V	N	9	1000	1287	27°	143.00
C5X5SQA*LB78V	M	9	1000	1276	47°	141.78
C5X5SQA*LB78V	W	9	1000	1301	62°	144.56
C5X5SQA*LB78V	XW	9	1000	1332	92°	148.00
C5X5SQA*LB78V	N	16	1500	2079	27°	129.94
C5X5SQA*LB78V	M	16	1500	2062	47°	128.88
C5X5SQA*LB78V	W	16	1500	2102	62°	131.38
C5X5SQA*LB78V	XW	16	1500	2152	92°	134.50
C5X5SQA*LB78V	N	18	2000	2326	27°	129.22
C5X5SQA*LB78V	M	18	2000	2307	47°	128.17
C5X5SQA*LB78V	W	18	2000	2353	62°	130.72
C5X5SQA*LB78V	XW	18	2000	2408	92°	133.78
C5X5SQA*LB78V	N	26	2500	2981	27°	114.65
C5X5SQA*LB78V	M	26	2500	2956	47°	113.69
C5X5SQA*LB78V	W	26	2500	3015	62°	115.96
C5X5SQA*LB78V	XW	26	2500	3086	92°	118.69
C5X5SQA*LB78V	N	30	3000	3328	27°	110.93
C5X5SQA*LB78V	M	30	3000	3300	47°	110.00
C5X5SQA*LB78V	W	30	3000	3366	62°	112.20
C5X5SQA*LB78V	XW	30	3000	3445	92°	114.83

Above Values reflect 3500K color temperatures.

Scaling factors for other temperatures: 2700K = .92 ; 3000K = .97 ; 4000K = 1.01 ; 5000K = 1.04

90 CRI = .83

Delivered Lumen Data (3500K Color Temperature) - Model with Acrylic Piece

FIXTURE	DECO ELEMENT	WATTAGE	RATED LUMENS	DELIVERED LUMENS	BEAM DISTRIBUTION	LPW
C5X5SQALB78V	AP	9	1000	1108	45°	120.43
C5X5SQALB78V	AP	16	1500	1865	45°	115.84
C5X5SQALB78V	AP	18	2000	2128	45°	115.65
C5X5SQALB78V	AP	26	2500	2828	45°	106.92
C5X5SQALB78V	AP	30	3000	3166	45°	105.89

Above Values reflect 3500K color temperatures.

Scaling factors for other temperatures: 2700K = .92 ; 3000K = .97 ; 4000K = 1.01 ; 5000K = 1.04

90 CRI = .83

Delivered Lumen Data (3500K Color Temperature) - Model with Long Reflector

FIXTURE	OPTIC	WATTAGE	RATED LUMENS	DELIVERED LUMENS	BEAM DISTRIBUTION	LPW
C5X5SQA*LB78V	SL	9	1000	1130	11°	125.56
C5X5SQA*LB78V	NL	9	1000	1039	21°	115.44
C5X5SQA*LB78V	ML	9	1000	1074	39°	119.33
C5X5SQA*LB78V	XL	9	1000	1205	71°	133.89
C5X5SQA*LB78V	SL	16	1500	1864	11°	116.50
C5X5SQA*LB78V	NL	16	1500	1713	21°	107.06
C5X5SQA*LB78V	ML	16	1500	1770	39°	110.63
C5X5SQA*LB78V	XL	16	1500	1987	71°	124.19
C5X5SQA*LB78V	SL	18	2000	2110	11°	117.22
C5X5SQA*LB78V	NL	18	2000	1941	21°	107.84
C5X5SQA*LB78V	ML	18	2000	2005	39°	111.36
C5X5SQA*LB78V	XL	18	2000	2237	71°	124.26
C5X5SQA*LB78V	SL	26	2500	2929	11°	112.65
C5X5SQA*LB78V	NL	26	2500	2692	21°	103.54
C5X5SQA*LB78V	ML	26	2500	2783	39°	107.04
C5X5SQA*LB78V	XL	26	2500	3123	71°	120.12
C5X5SQA*LB78V	SL	30	3000	3268	11°	108.93
C5X5SQA*LB78V	NL	30	3000	3003	21°	100.10
C5X5SQA*LB78V	ML	30	3000	3104	39°	103.47
C5X5SQA*LB78V	XL	30	3000	3484	71°	116.13

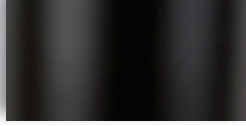
Above Values reflect 3500K color temperatures.

Scaling factors for other temperatures: 2700K = .92 ; 3000K = .97 ; 4000K = 1.01 ; 5000K = 1.04

90 CRI = .83

COLOR CHART

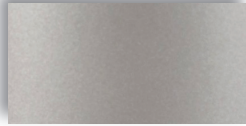
Standard Finishes (Powder Coat)



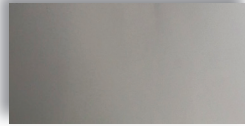
Matte Black (B)



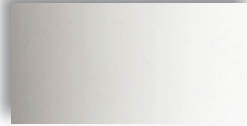
Bronze (Z)



Satin Aluminum (SA)



Metallic Aluminum (MA)



Matte White (Standard)

Special Finishes (Powder Coat)

Specify color followed by finish: 1 = Matte; 2 = Semi-Gloss; 3 = Gloss

Example: BGY1



Blue Gray (BGY)
(RAL #5014)



Royal Blue (RBL)
(RAL #5017)



Medium Blue (MBL)
(RAL #5015)



Sky Blue (SKY)
(RAL #5012)



Turquoise (TRQ)
(RAL #5918)



Forest Green (FGR)
(RAL #6024)



Green Apple (AGR)
(RAL #6018)



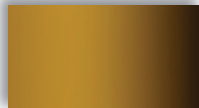
Yellow (YLW)
(RAL #1018)



Orange Yellow (OYL)
(RAL #1017)



Orange (ORG)
(RAL #2003)



Yellow Ochre (YOC)
(RAL #1024)



Burnt Umber (UMB)
(RAL #8004)



Burnt Sienna (SNA)
(RAL #8014)



Brick Red (BRD)
(RAL #3005)



Cadmium Red (CAD)
(RAL #3020)



Pinot Noir (PNR)
(RAL # 4004)



Magenta (MAG)
(RAL #4008)



Violet (VIL)
(RAL #4007)

Custom finishes and colors available on request.