

MOUNTING ACCESSORIES for RECESSED LIGHTING PRODUCTS

Model #9127

Interlocking adjustable c-channel mounting bar set, adjustable length from 14-1/2" to 24-1/2". For use with products that have butterfly mounting brackets.*



Close-up view

Model #101782

One-piece solid bar set. Includes two bars and four t-bar mounting clips. For use with products that have butterfly mounting brackets.*



Close-up view

Model #24TBH

One piece c-channel mounting bar set, measures 24". Includes two bars and four t-bar mounting clips. For use with products that have butterfly mounting brackets.*



Close-up view

Model #27BH

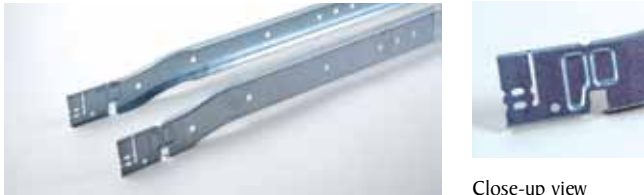
One-piece solid bar set, measures 27-1/4" in length. For use with products that have butterfly mounting brackets* or commercial frames ^.



Close-up view

Model #24CBH

One piece "B-Line" c-channel mounting bar set which measures 27-3/4" long. For use with products that have butterfly mounting brackets.*



Close-up view

Model #26UBH

Interlocking adjustable mounting bars, adjustable from 14" to 26". For use with products that have butterfly mounting brackets* or commercial frames ^.



Close-up view

Model #9152

One piece c-channel, 52" in length. Includes two bars.



Close-up view

Model #TBHB

Adjustable mounting bars, adjustable from 19-1/4" to 32". Four bars and four t-bar mounting clips per set. For use with products that have butterfly mounting brackets* or commercial frames ^.



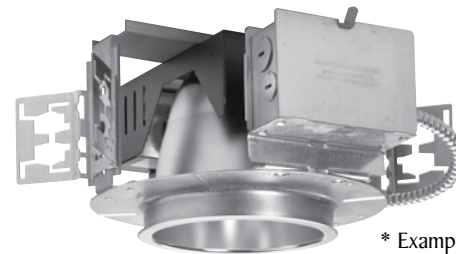
Close-up view

Many Legends products are supplied standard with 26UBH.

All Coventry products must specify a mounting bar as they are not included.



^ Example commercial frame.



* Example of product with butterfly mounting bracket.